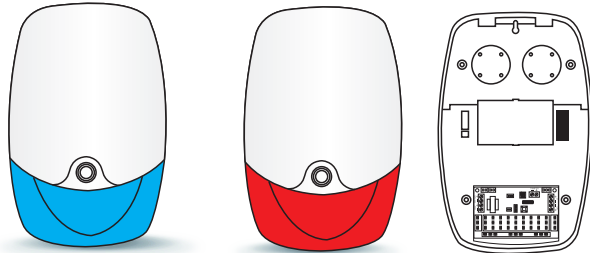


Wireless Outdoor Strobe Siren Installation and Specification



Descriptions

The siren is a new generation of professional high power acoustic siren with backup battery, flashing light and sounds etc. all in one.

Siren Features:

- 1) Dual tamper Protection from upper cover removal or removal of the siren housing from wall
- 2) Siren Output 115 db for single sound, 120 db for twin sound
- 3) LED light indicator for easy status confirmation. The Indications are as follow:
 - All LED lights will flash on for 5 seconds after connected to power.
 - standby mode, LED 1, and LED 3 flash alternatively once per second. Can also switch off LED by DIP switch 2.
 - L+L- trigger, LED light 1,2,3 will flash 3 times per second.
 - S+,S- trigger All LED light will flash 3 times per second.
 - Siren Sounds: one tone, six tone(Optional)
 - Large Print area for company logos

Attention: Factory default setting is standby mode LED ON

Specifications

Weight: 1.3kgs

Current consumption: 20mAh, 12VDC

Backup battery: 12VDC, 1.2A (7.2V 500mAh for optional)

Current: 220mAh, 12VDC

Flash current: 180mAh, 12VDC

Timers: 1 minutes (test), 3mins and 6 mins

Tamper trigger: INT/EXT for optional

Working environment: -30 ° to 150° F (-30°C to 70°C)

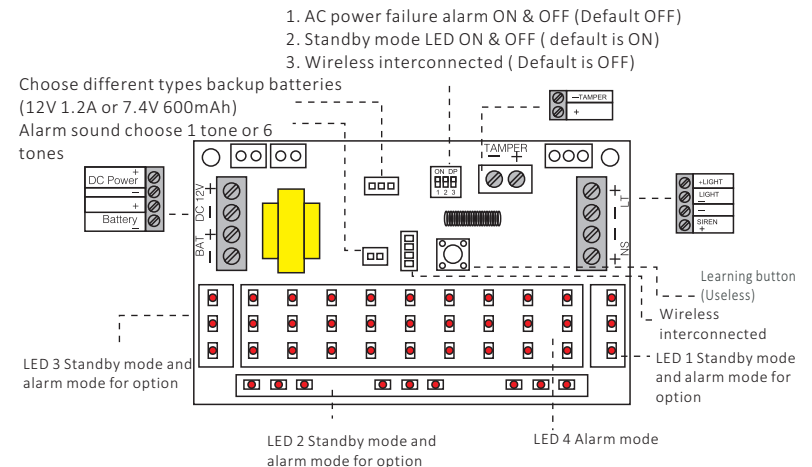
Housing protection level: Water splash resistant, plastic ABS with UV protection, Ip65 conformal coated circuit board

Lens color: Blue, red, orange, white color for optional.

Wireless frequency: 315MHz (433/868MHz for option)

PCB Diagram / Jumper Setting

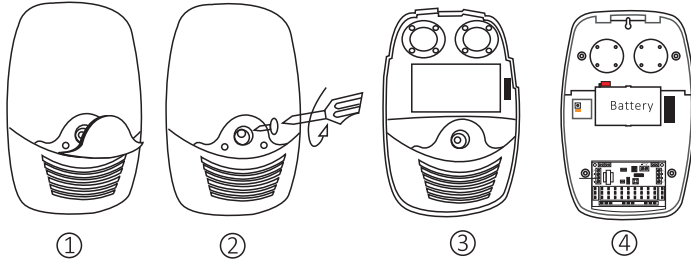
Note: The jumper setting should be done under the condition of power off.



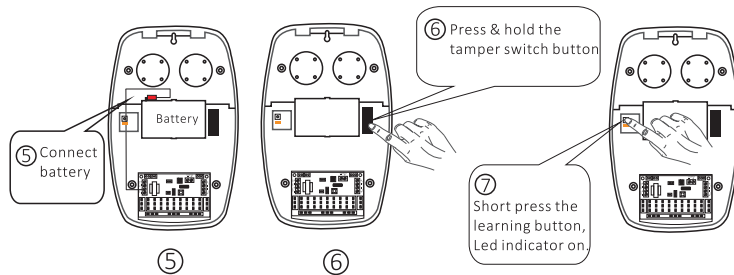
How to connect a gateway to work with the siren?

For alarm panel with 433MHz, it's better to connect a 315MHz siren to avoid signal interference and vice versa.

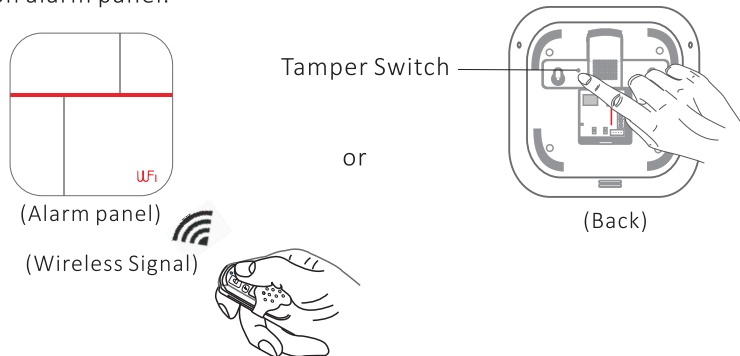
1) Open the siren



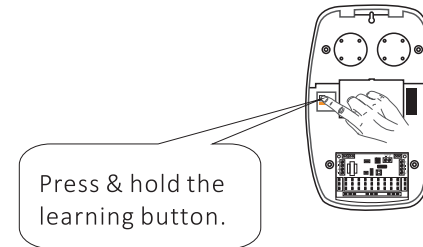
2) Connect battery and press learning button



2) Activate SOS alarm on remote control or trigger the tamper switch on alarm panel.



How to delete gateway to work with the siren?



Press & hold the learning button until the LED indicator nearby the button is off, it means deleting successfully.

Please note that to add a siren with 868MHz only scan the QR code on the siren through smart phone App.

Installation instructions

Attention: If tamper switch was not switched on, siren can not work properly

- 1) Choose the mounting location for the siren—the wall must be even and free of hole and excessive protrusions
- 2) Open the siren housing and mount it on the wall by 3 screws.
- 3) Connect to wires to the terminal, and plug the terminal to your drive board.
- 4) Power on the system and check that its function properly, and connect to backup battery
- 5) Close the housing. And make sure that tamper switch press down and set to work.
- 6) ALL LED light will flash on for 5 seconds and go off, which means that every thing is going well.